

**FOR LEASE** Available Immediately



# 175 Thomas Johnson Drive

Frederick, MD 21702






## Overview

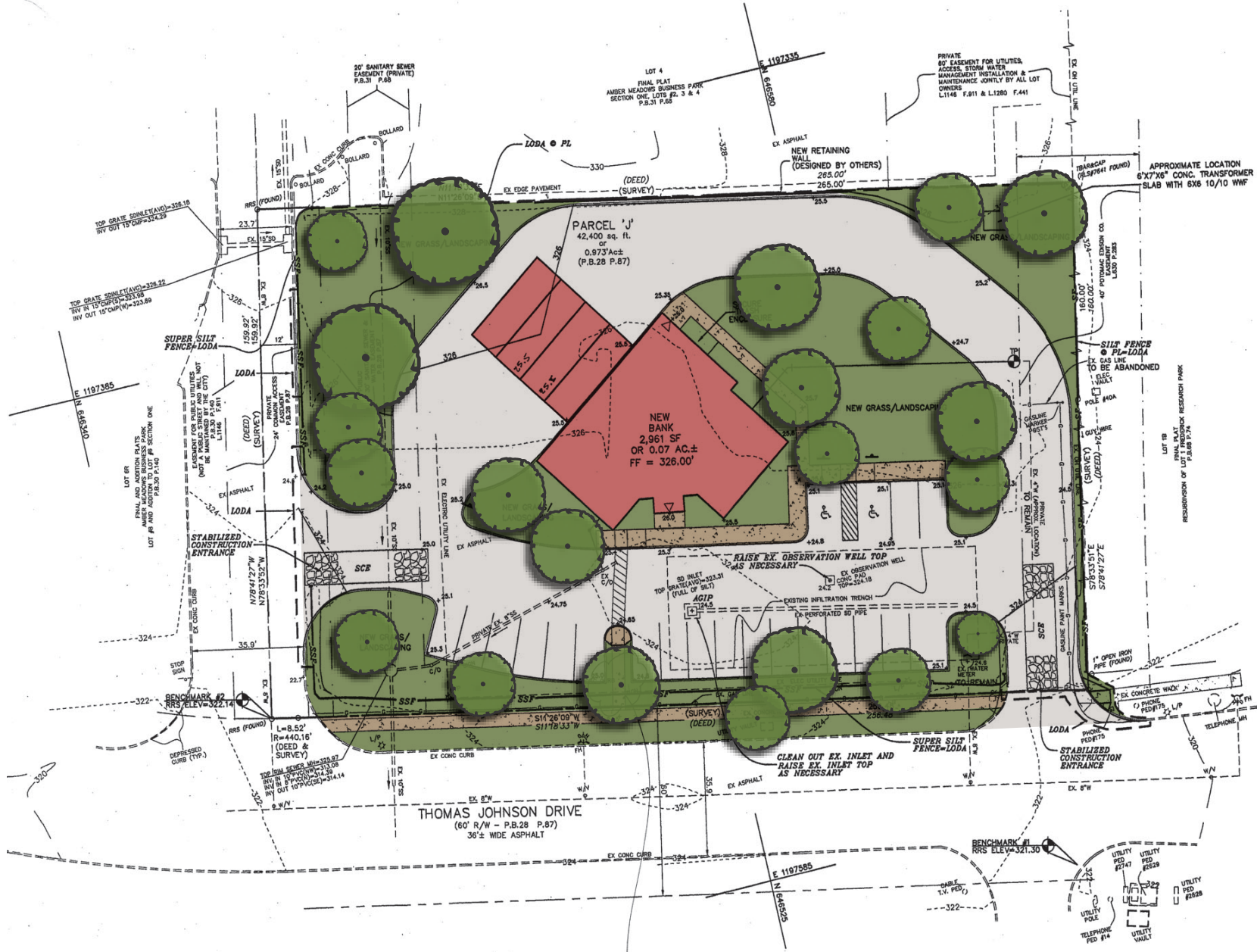
Freestanding 2,961 square foot bank branch on 0.92 acres. Four drive thru lanes with bypass and 21 parking spaces.

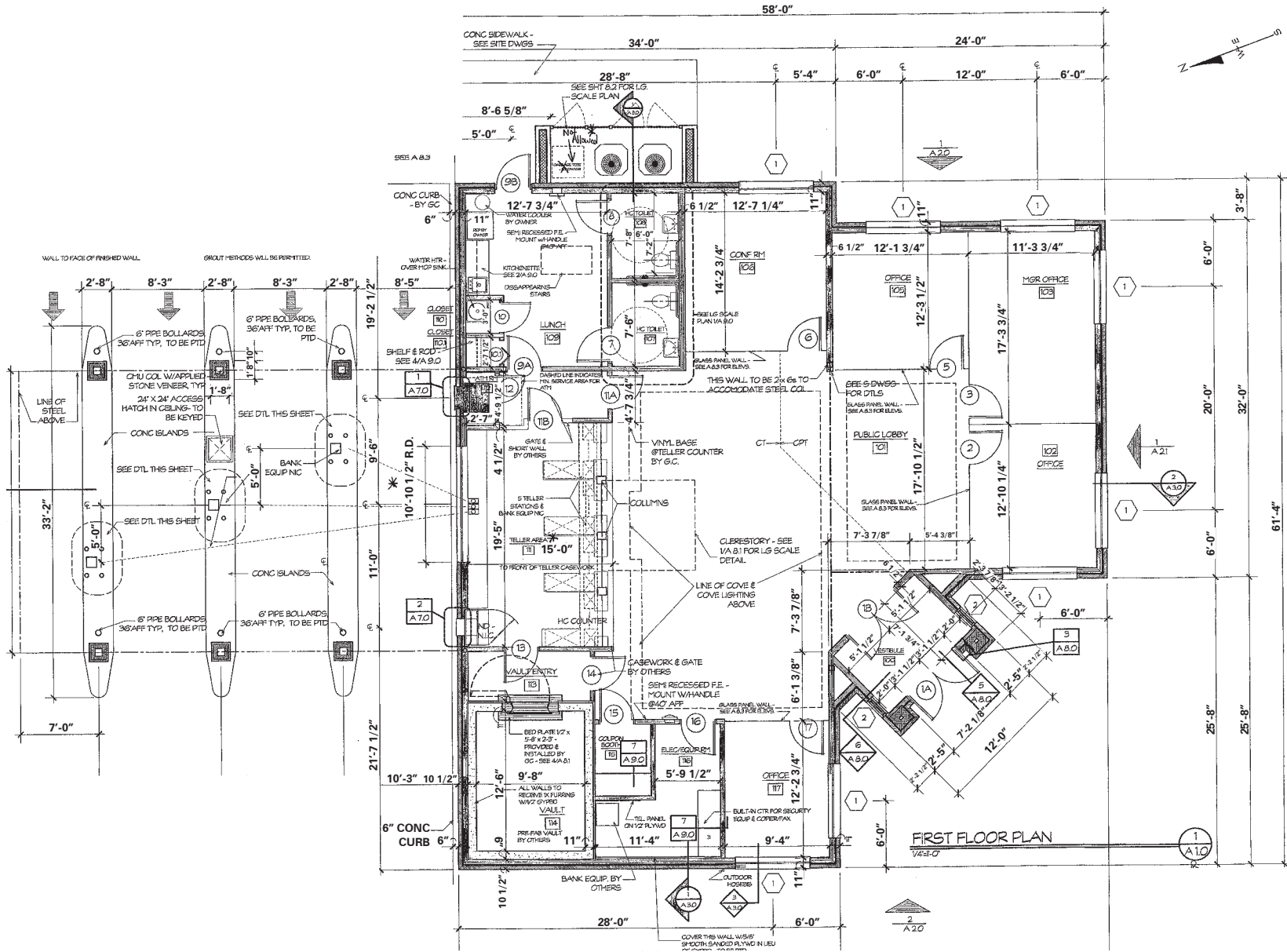
## Quick Facts

Availability	Immediate
Size	2,961 Square Feet
Rental Rate	Negotiable
Net Charges	TBD
Zoning	GC - General Commercial (City of Frederick)
Nearby Tenants	

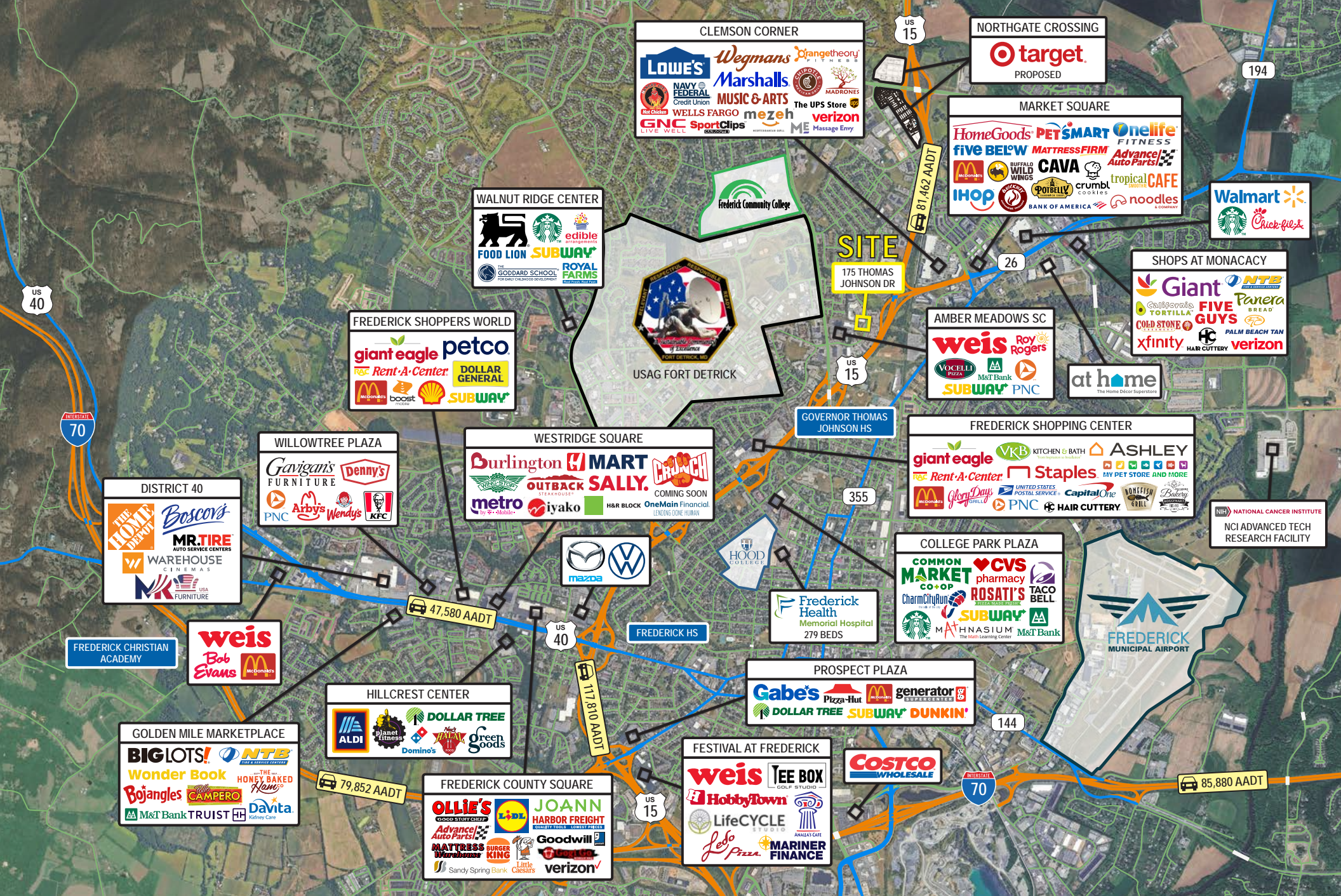


2024 Demographics	1 mile	3 miles	5 miles
 POPULATION	10,711	80,839	141,360
 HOUSEHOLDS	4,482	31,659	53,576
 AVG. HH INCOME	\$100,996	\$125,937	\$128,382
 DAYTIME POPULATION	19,116	98,039	152,687
 TRAFFIC COUNT	81,462 AADT (MD-15)	8,504 AADT (Thomas Johnson Dr)	










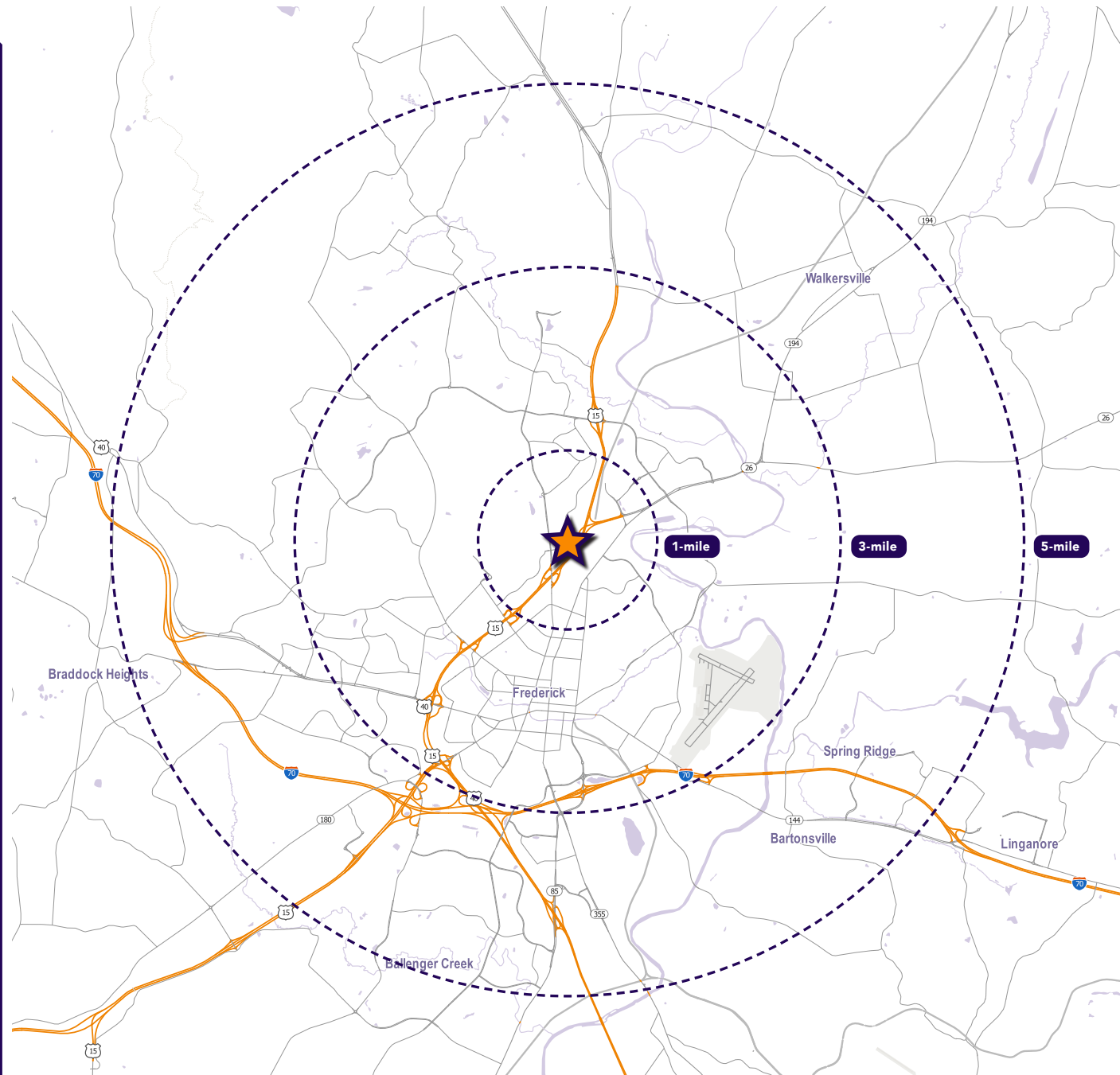
# Interested? Contact:

**Andrew Segall**

 [asegall@segallgroup.com](mailto:asegall@segallgroup.com)

 410.753.3947

 443.960.0361



## Maryland

605 South Eden Street  
Suite 200  
Baltimore, MD 21231  
410.753.3000

## DC • Northern VA

8245 Boone Boulevard  
Suite 800  
Tysons, VA 22182  
202.833.3830

## Richmond

4870 Sadler Road  
Suite 300  
Glen Allen, VA 23060  
804.336.2501

## Online

[www.segallgroup.com](http://www.segallgroup.com)

Member of  
**REALTY  
RESOURCES**

**RETAIL  
READY.**

**segall**  
GROUP