

FOR LEASE Available Immediately

11840 Mapleville Road

Smithsburg, MD 21783

Overview

0.9285-acre commercial property at signalized corner of Jefferson Boulevard and Mapleville Road. Fast-growing and underserved area of Washington County. Adjacent to new proposed Sheetz store. Located along MD-66, a major commuter route to I-70.

Quick Facts

Availability: Immediate
Size: 0.9285 acres
Rental Rate: Negotiable
Net Charges: TBD
Nearby Tenants: **MARTIN'S DUNKIN'**

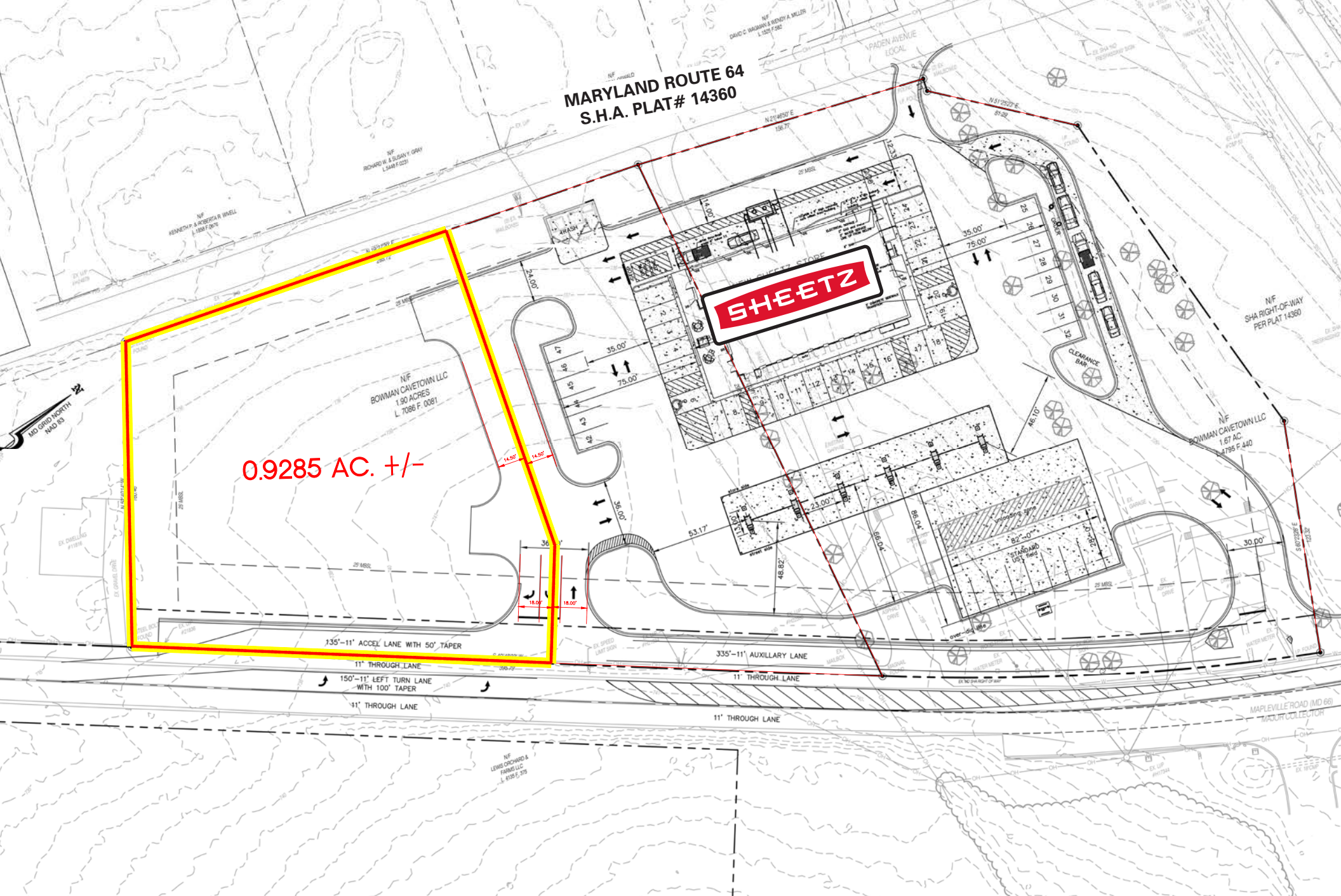


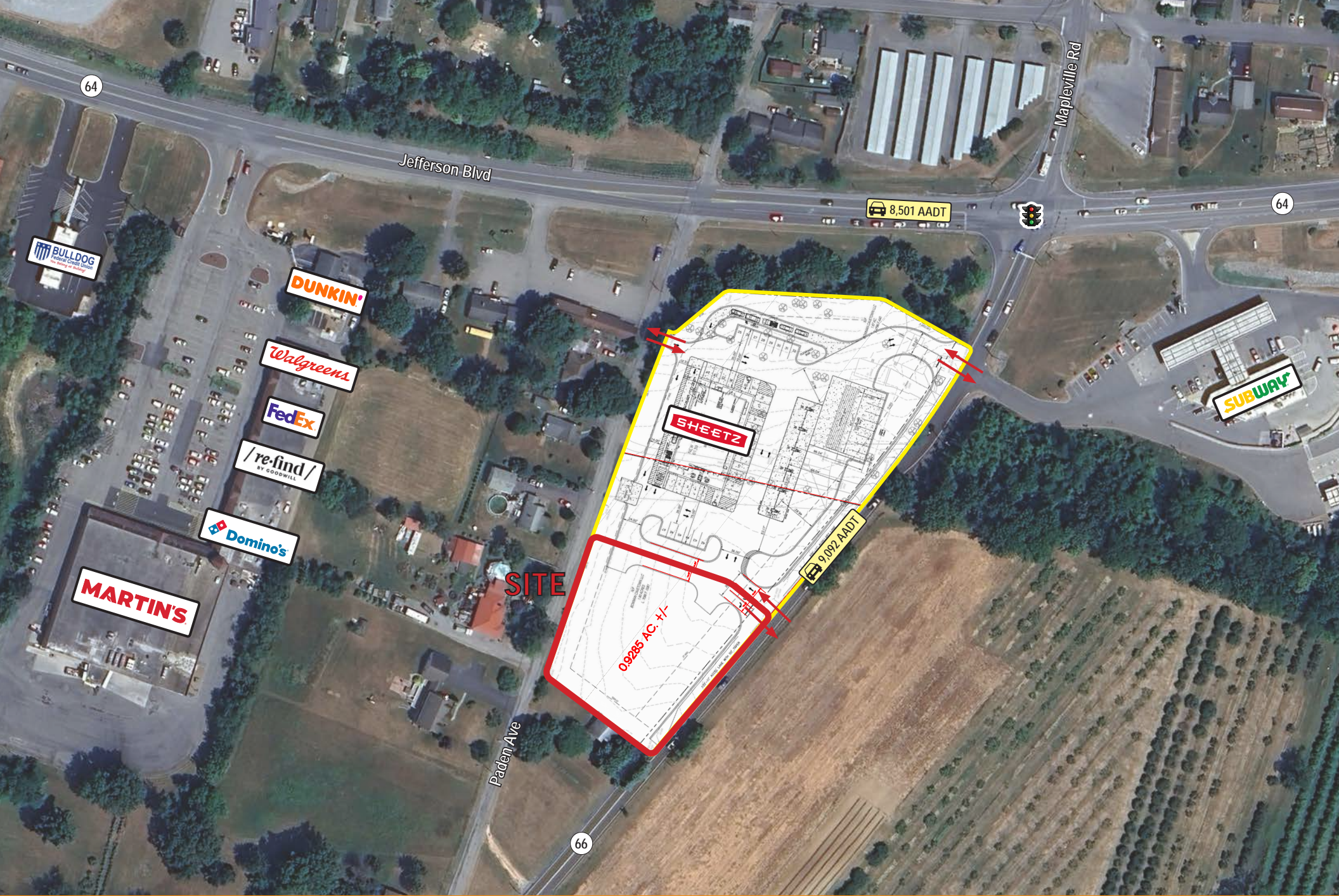
2024 Demographics	1 mile	3 miles	5 miles
POPULATION	2,572	8,238	22,092
HOUSEHOLDS	921	2,995	8,325
AVG. HH INCOME	\$105,342	\$111,515	\$113,670
DAYTIME POPULATION	2,097	6,486	24,576
TRAFFIC COUNT	9,092 AADT (Mapleville Rd)	8,501 AADT (Jefferson Blvd)	

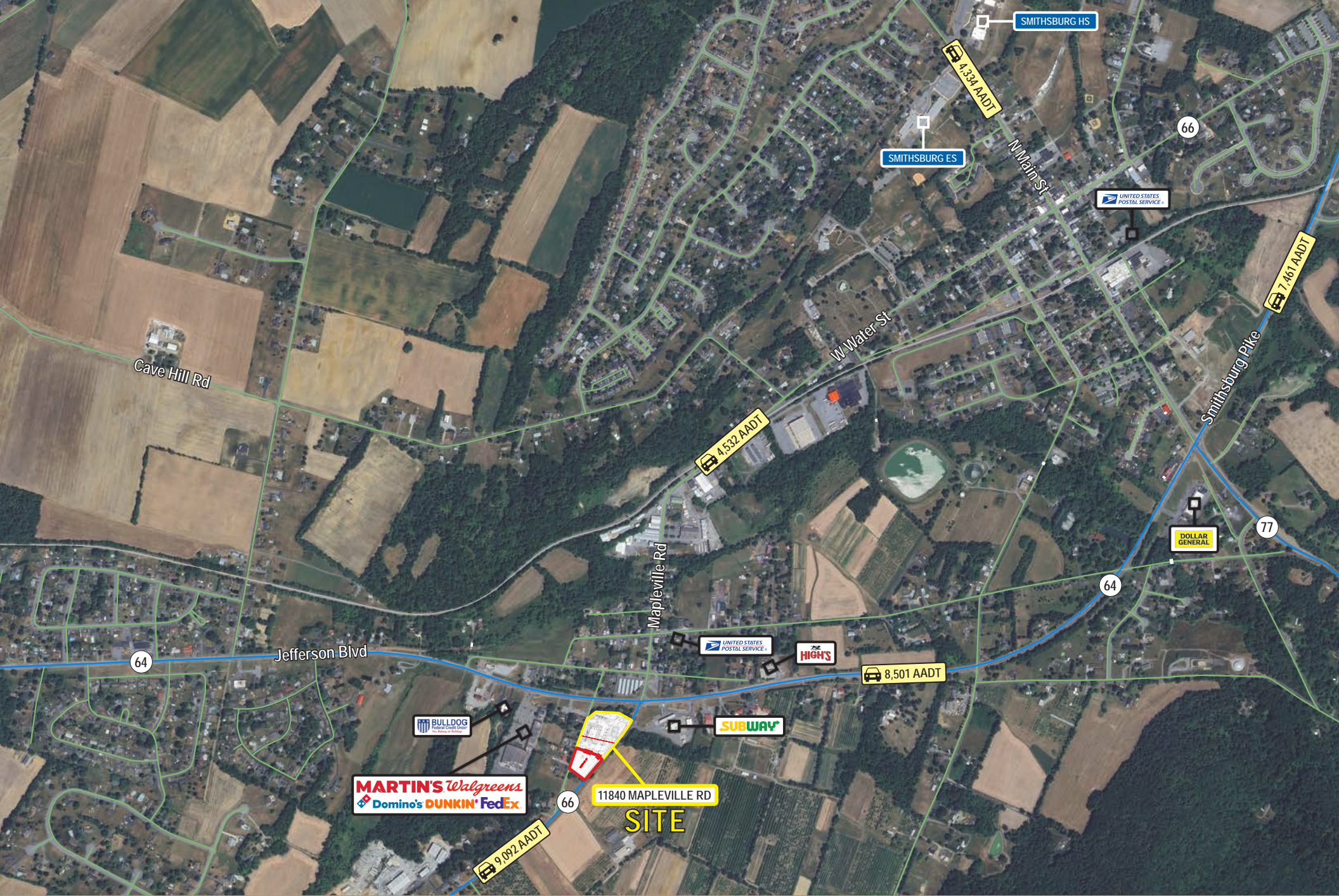


MARYLAND ROUTE 64
S.H.A. PLAT # 14360

0.9285 AC. +/-









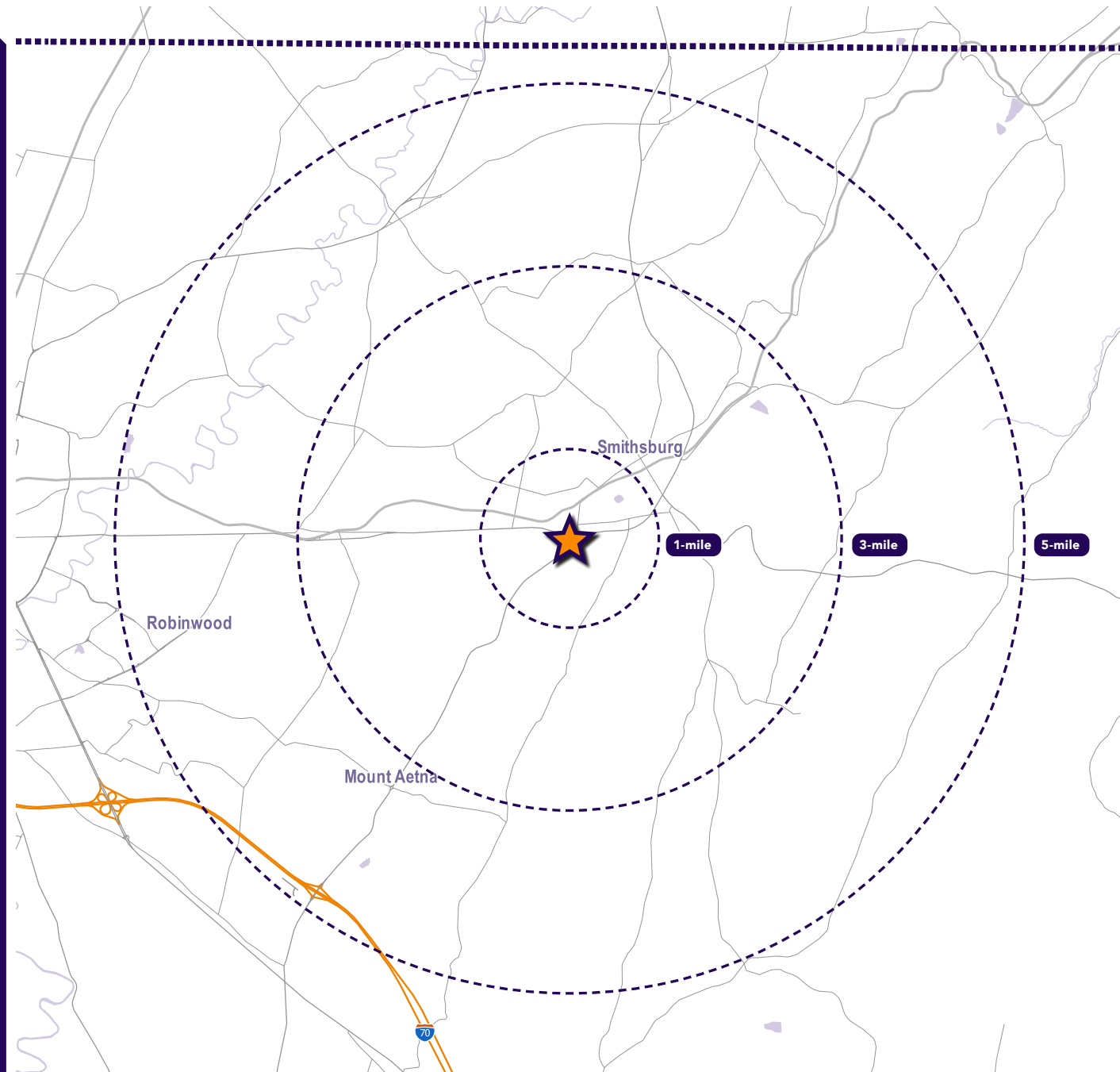
Interested? Contact:

Andrew Segall

 asegall@segallgroup.com

 410.753.3947

 443.960.0361



Maryland

605 South Eden Street
Suite 200
Baltimore, MD 21231
410.753.3000

DC • Northern VA

8245 Boone Boulevard
Suite 800
Tysons, VA 22182
202.833.3830

Richmond

4870 Sadler Road
Suite 300
Glen Allen, VA 23060
804.336.2501

Online

www.segallgroup.com

Member of


**RETAIL
READY.**

segall
GROUP