

FOR LEASE Available Immediately



TENANT CURRENTLY OPERATING - PLEASE DO NOT DISTURB

1030 S Linwood Avenue

Baltimore, MD 21224

Overview

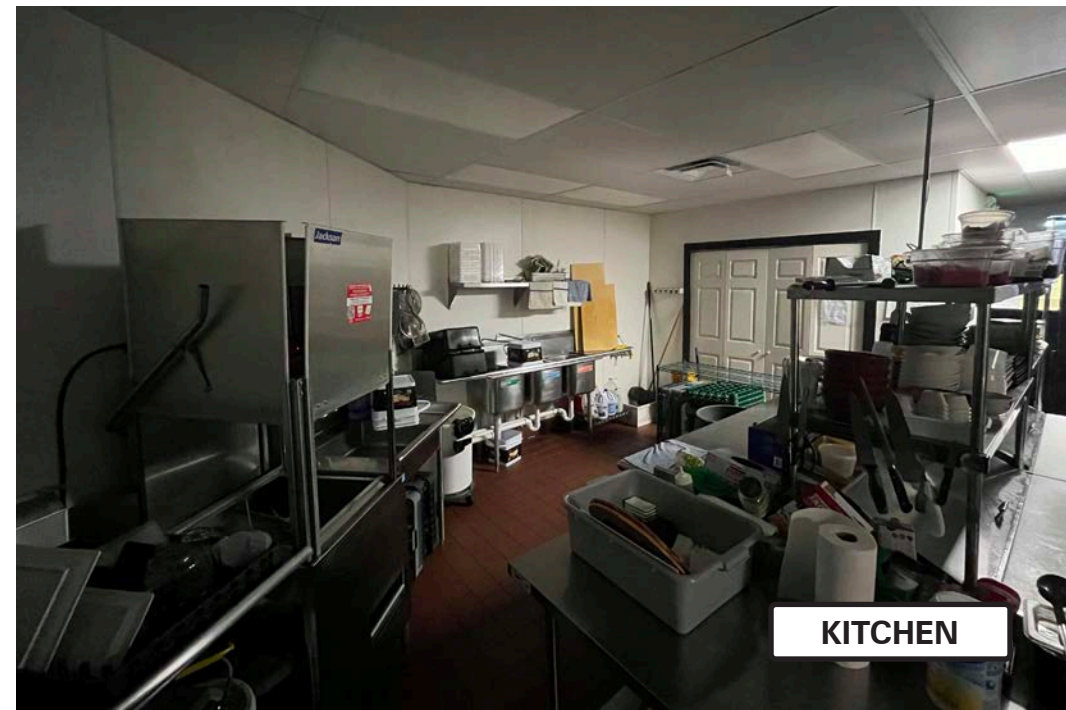
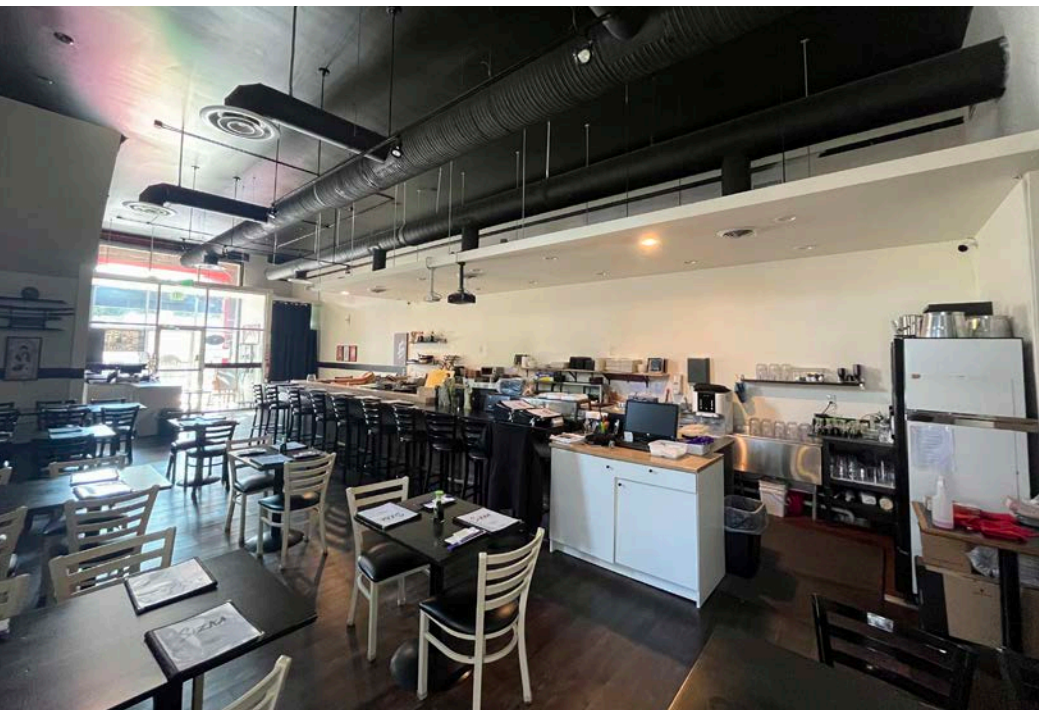
Prime second-generation restaurant space available for lease, situated at the west end of O'Donnell Square. Canton is known for its vibrant energy and charming character. Its bustling waterfront and diverse array of restaurants and shops create a dynamic and inviting atmosphere. With its strong sense of community and historic charm, Canton is a great destination for an aspiring business owner.

Quick Facts

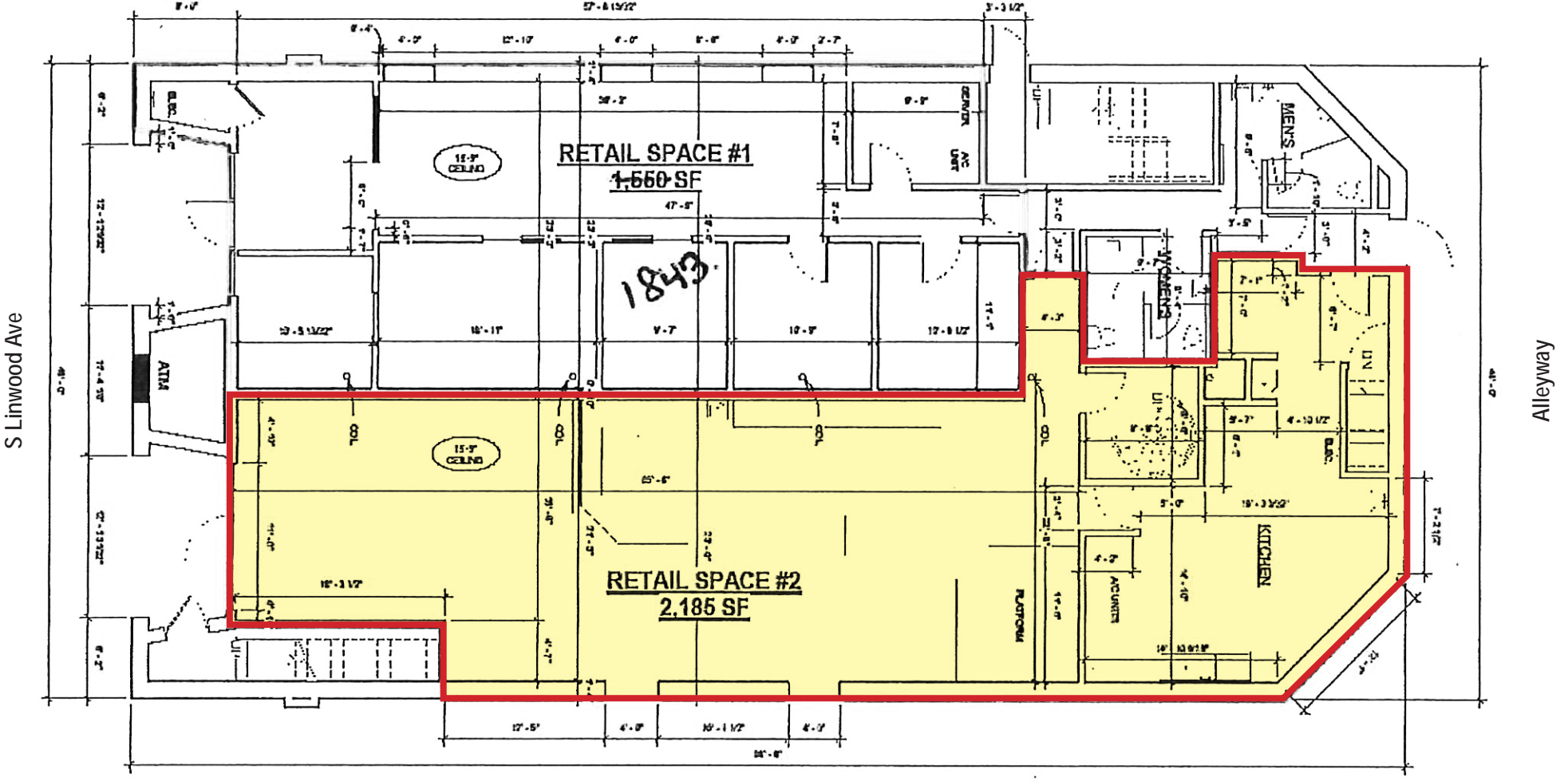
- Availability** Immediate
- Size** 2,185 square feet
- Asking Rent** Negotiable
- Net Charges** Insurance \$0.79 psf, RET \$2.21 psf
- Nearby Tenants**



2023 Demographics	1 mile	2 miles	3 miles
POPULATION	34,827	93,518	178,929
HOUSEHOLDS	16,798	42,367	82,251
AVG. HH INCOME	\$142,705	\$121,623	\$100,419
DAYTIME POPULATION	33,523	150,183	326,742
TRAFFIC COUNT	2,125 AADT (S Linwood St)	26,095 AADT (O'Donnell St)	



← O'Donnell St (Eastbound)

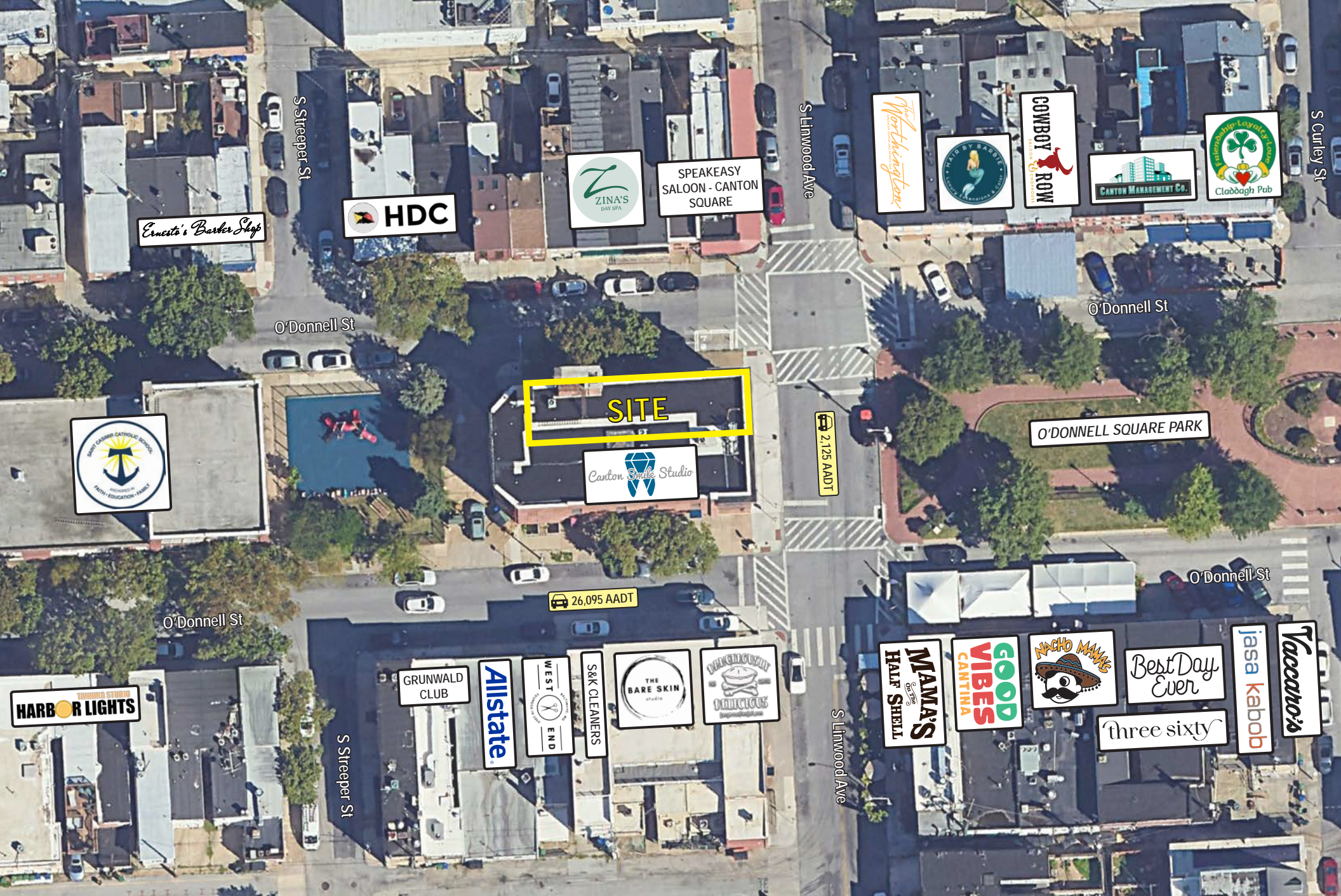


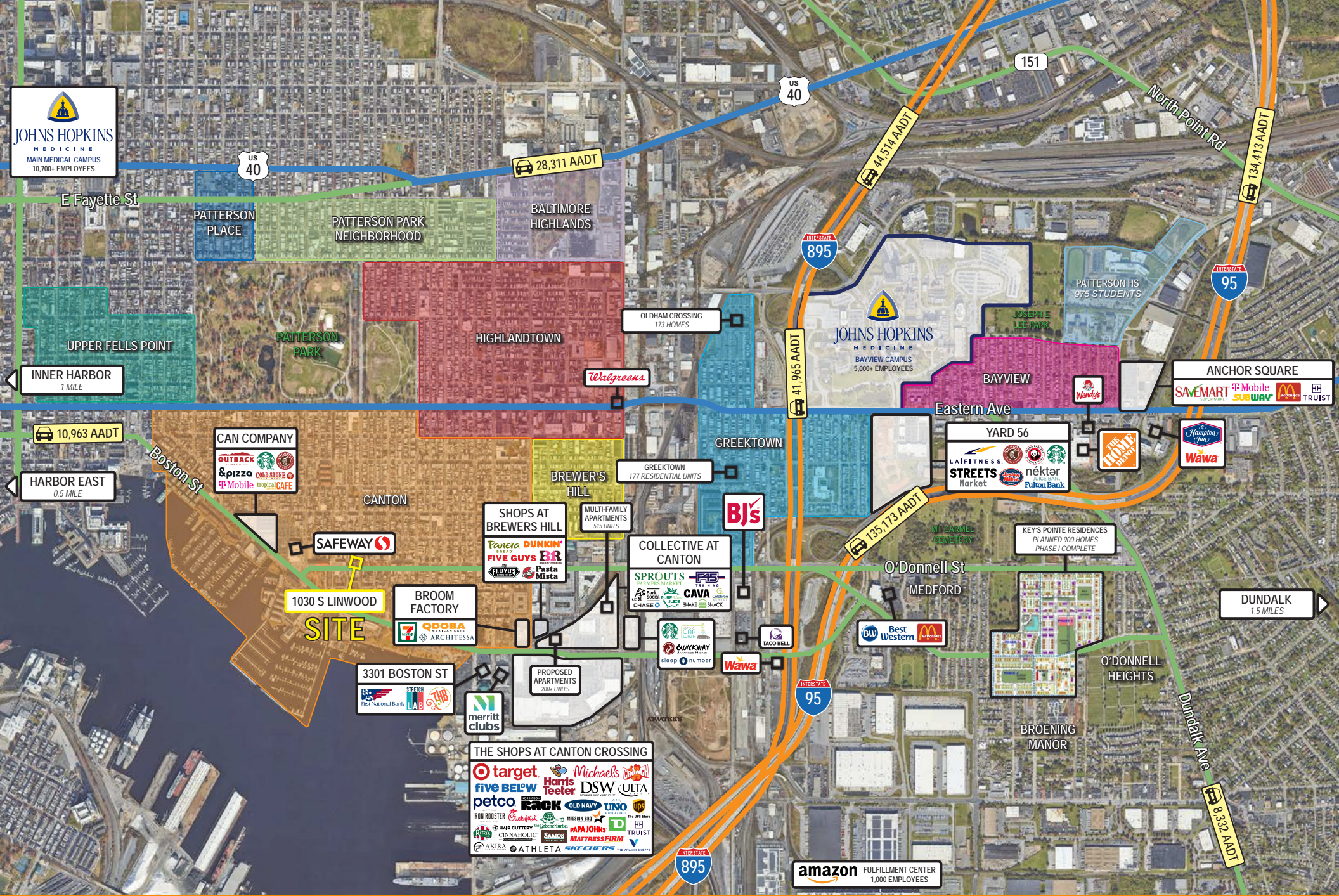
S Linwood Ave

Alleyway

O'Donnell St (Westbound) →









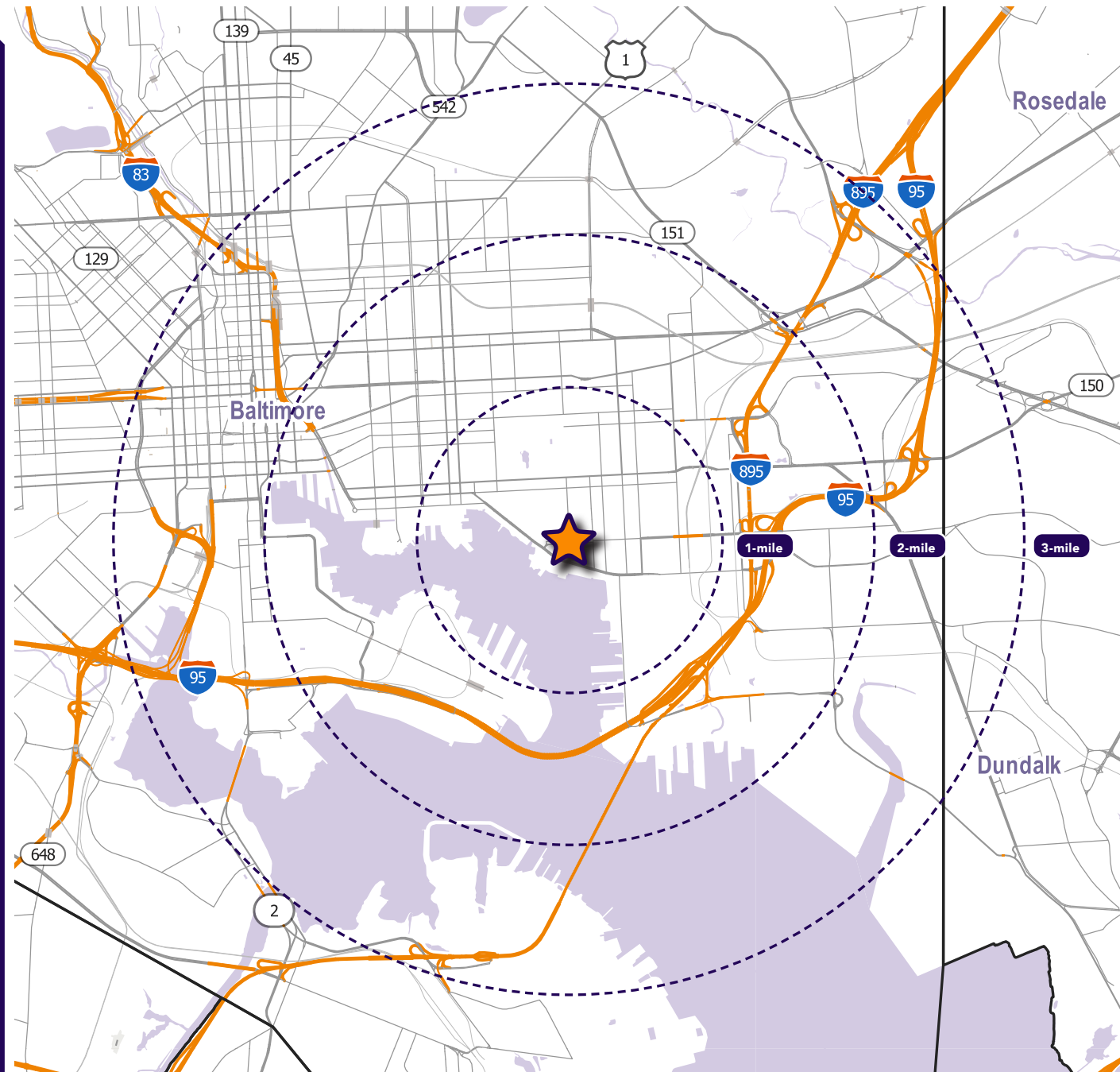
Interested? Contact:

Marcelo Grosberg

 mgrosberg@segallgroup.com

 410.753.3948

 443.927.6100



Maryland

605 South Eden Street
Suite 200
Baltimore, MD 21231
410.753.3000

DC • Northern VA

8245 Boone Boulevard
Suite 800
Tysons, VA 22182
202.833.3830

Richmond

4870 Sadler Road
Suite 300
Glen Allen, VA 23060
804.336.2501

Online

www.segallgroup.com

Member of
REALTY RESOURCES

**RETAIL
READY.**

segall
GROUP