

FOR LEASE Available Immediately



360°
VIRTUAL TOUR

segall
GROUP

COMMERCIAL REAL ESTATE

1390 Lancaster Street

Baltimore, MD 21231

Overview

Second generation restaurant space (former Ra Sushi) on the ground floor of the Eden residential building in Harbor East. Premises is available for immediate occupancy and serves Fells Point, Harbor East and the growing Harbor Point project which includes a hotel, residential and office, including T Rowe Price, Morgan Stanley and Constellation Energy, among others.

Quick Facts

Availability	Immediate
Size	5,460 square feet
Rental Rate	\$34.00 per square foot As-Is
Net Charges	\$7.80 per square foot
Co-Tenants	

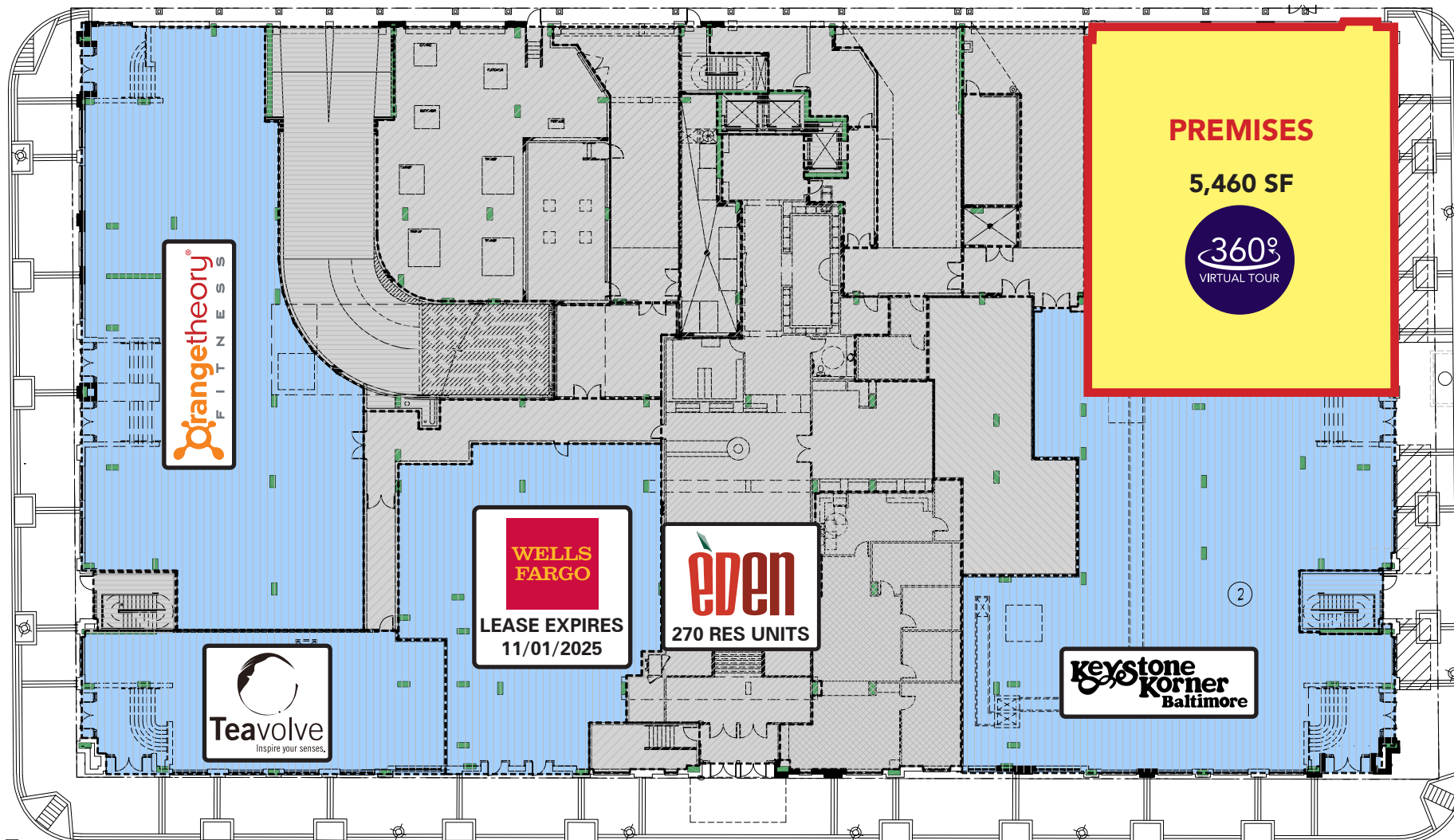


2023 Demographics	0.5 mile	1 mile	1.5 miles
POPULATION	8,353	38,242	86,280
HOUSEHOLDS	4,690	20,266	43,646
AVG. HH INCOME	\$151,971	\$141,325	\$123,263
DAYTIME POPULATION	14,831	113,561	181,582
TRAFFIC COUNT	9,830 AADT (Alicanna St)	4,362 AADT (S Caroline St)	

S SPRING ST

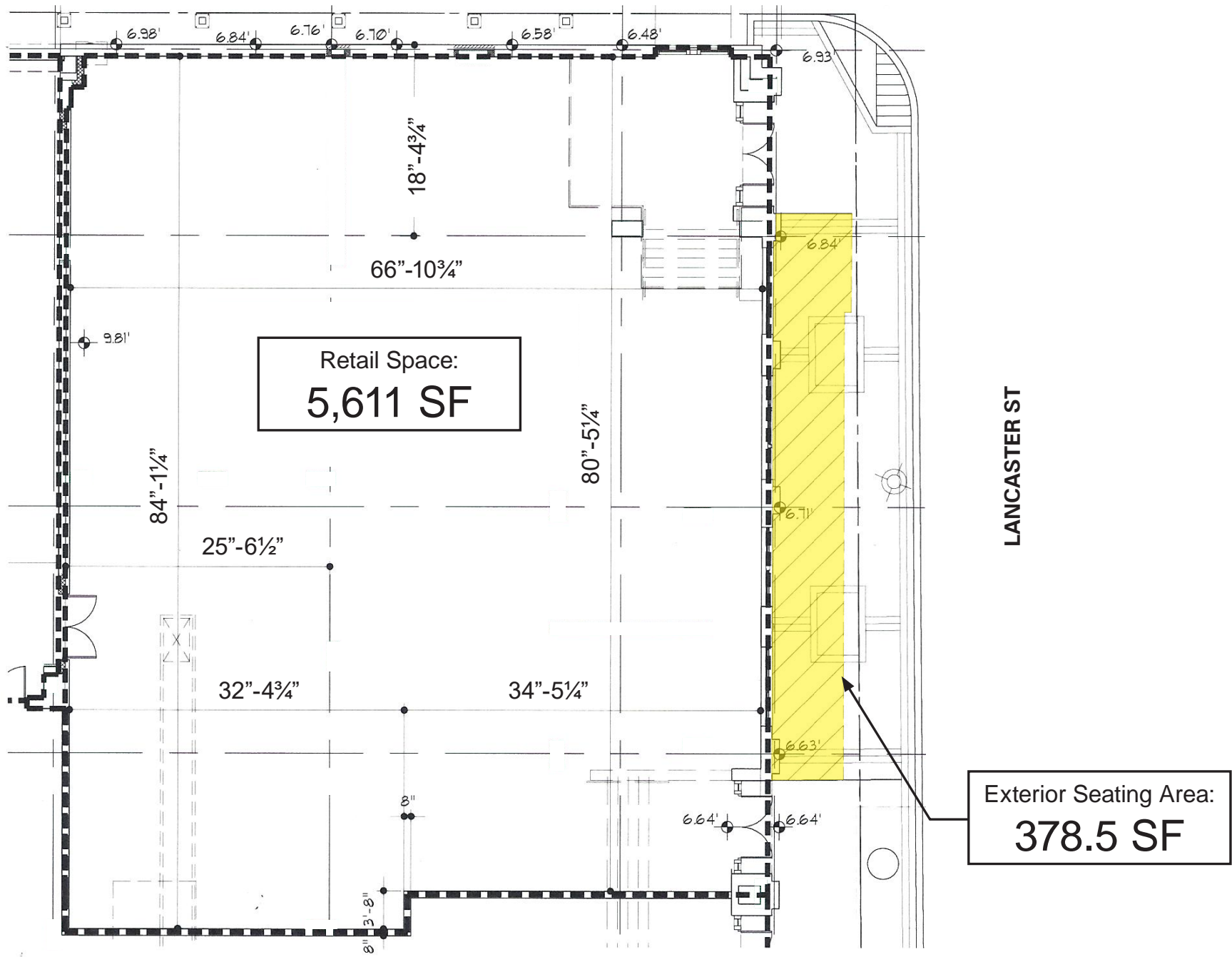


ALICEANNA ST



LANCASTER ST

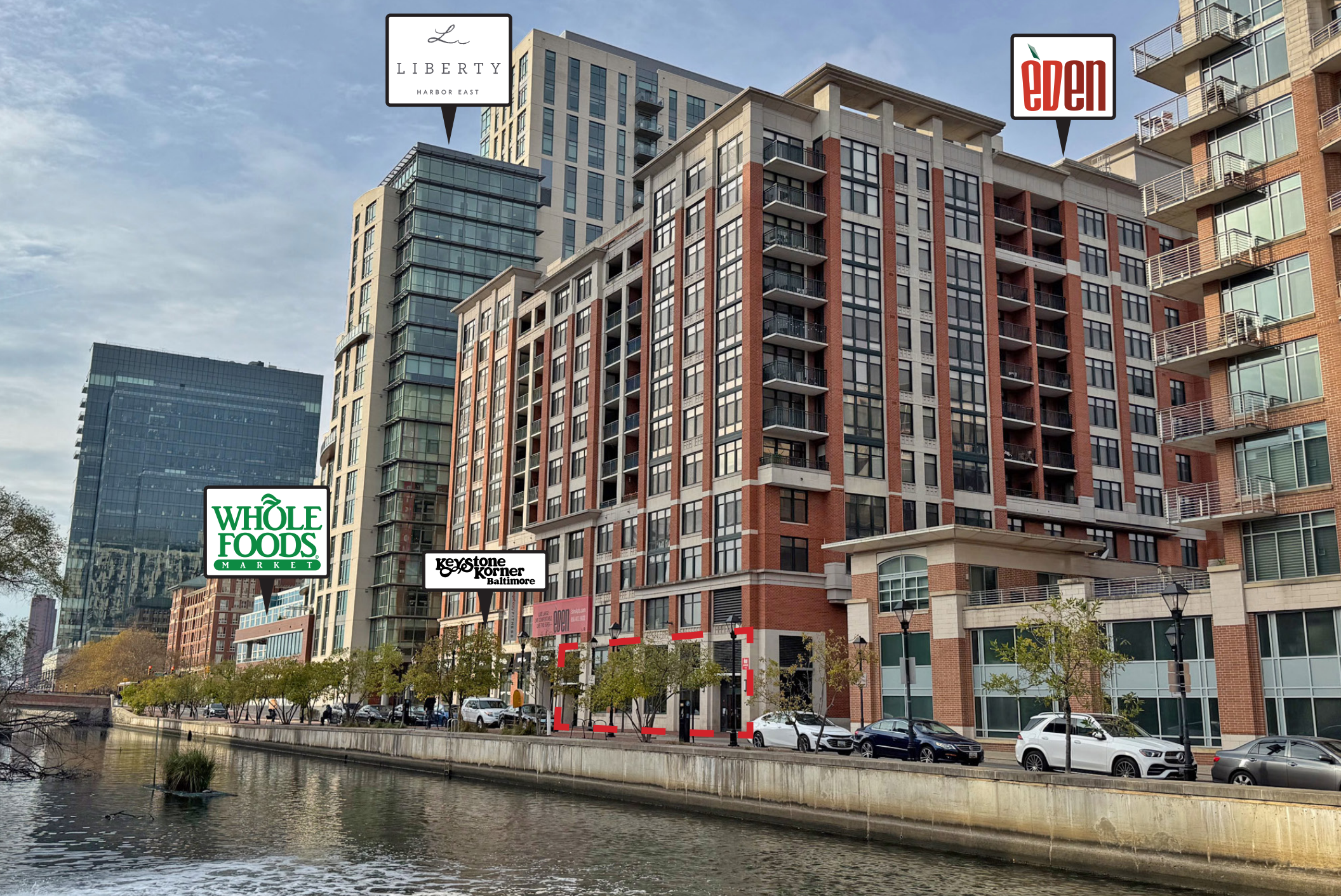
S EDEN ST









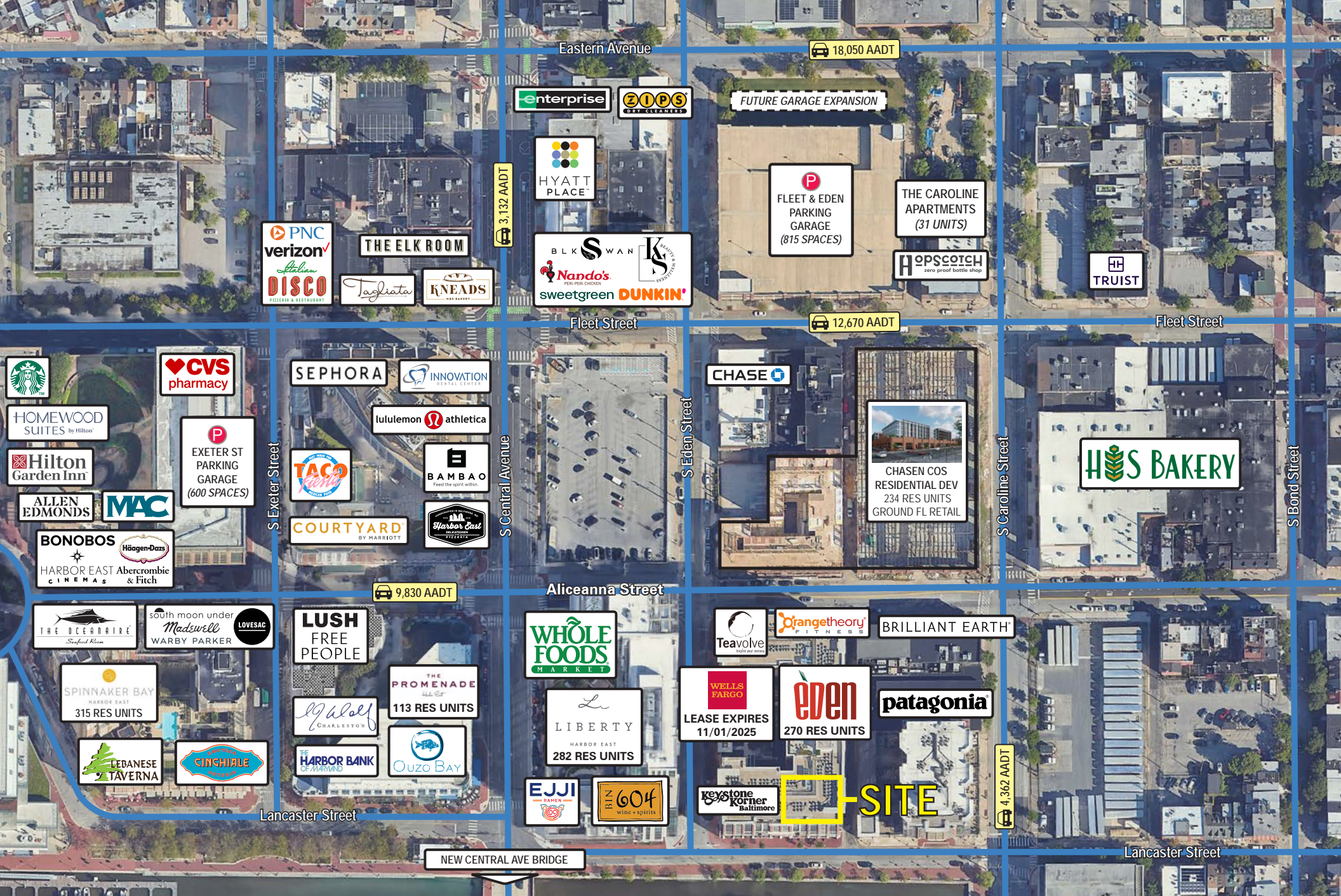


Li
LIBERTY
HARBOR EAST

eden

WHOLE
FOODS
MARKET

keystone
corner
Baltimore





HARBOR POINT
3+ MILLION SF MIXED-USE DEVELOPMENT

WALK TIME KEY
5 MINUTES
10 MINUTES

SITE →

Market Aerial

Interested? Contact:

Andrew Segall

✉ asegall@segallgroup.com

☎ 410.753.3947

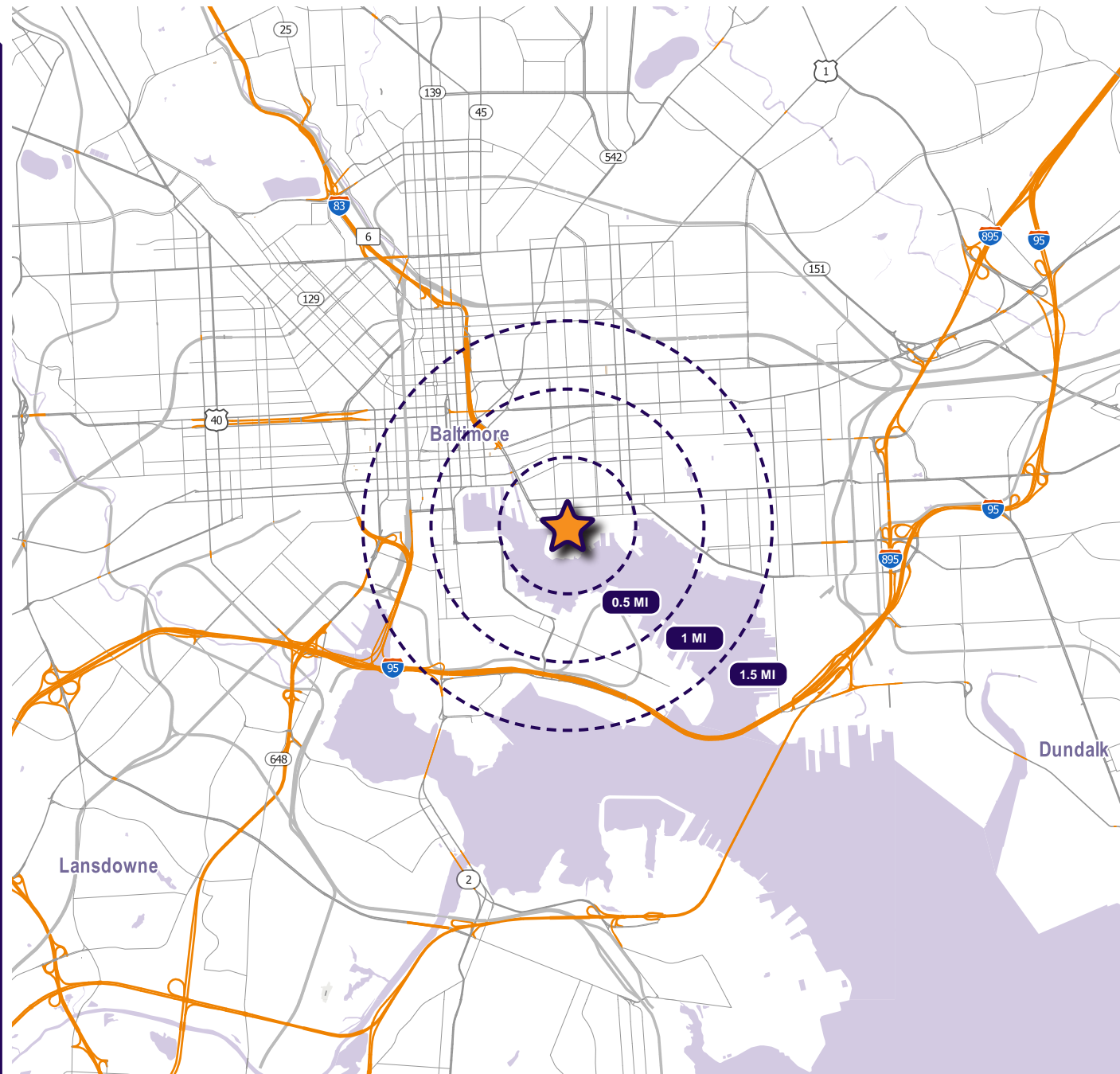
📱 443.960.0361

Jamie Lanham

✉ jlanham@segallgroup.com

☎ 804.336.2501

📱 410.336.0138



Maryland

605 South Eden Street
Suite 200
Baltimore, MD 21231
410.753.3000

DC • Northern VA

8245 Boone Boulevard
Suite 800
Tysons, VA 22182
202.833.3830

Richmond

4870 Sadler Road
Suite 300
Glen Allen, VA 23060
804.336.2501

Online

www.segallgroup.com

Member of
**REALTY
RESOURCES**

**RETAIL
READY.**

segall
GROUP