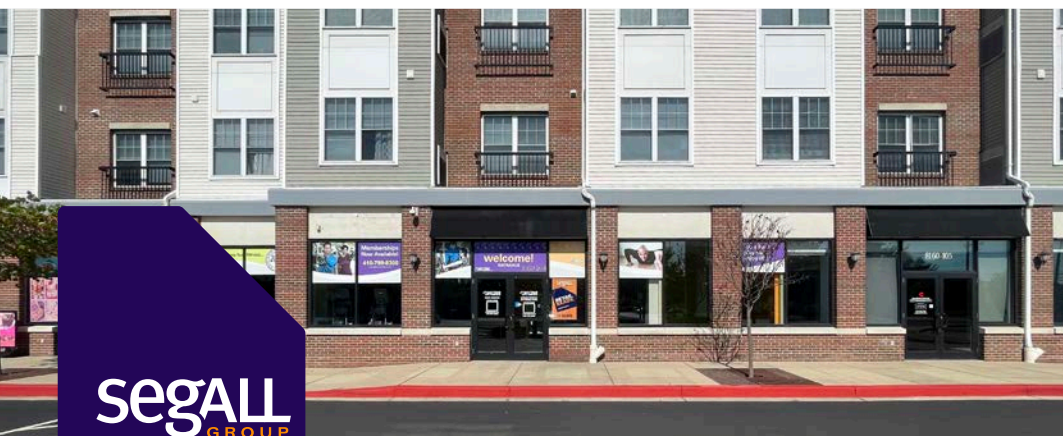


**FOR LEASE** Available Immediately



# Mission Place

8152 Washington Boulevard, Jessup, MD 20794

## Overview

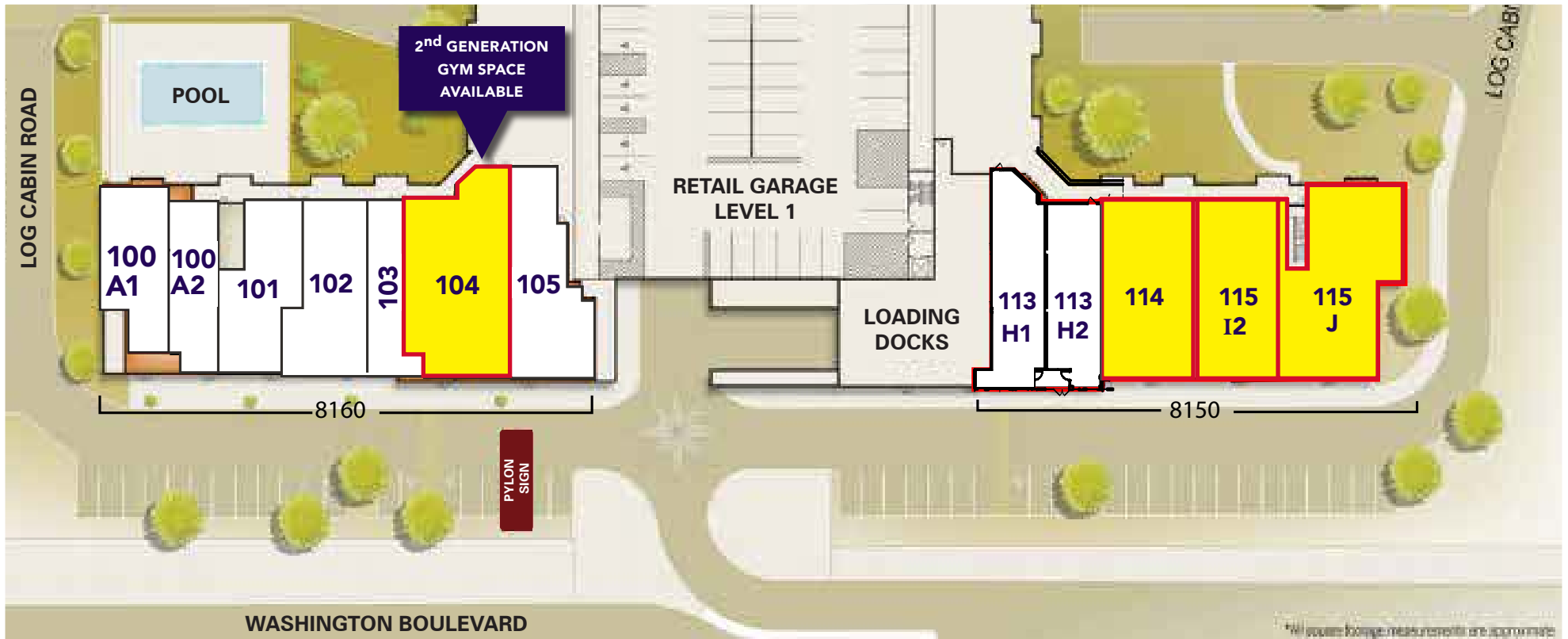
Located just off Washington Boulevard (US 1), Mission Place is a mixed use project consisting of 262 luxury apartment units and 23,000 square feet of first-floor retail/office space with surface parking. The project offers excellent visibility to the Route 1 corridor and proximity to MD Route 175 and I-95. This property draws from commuters to and from Fort Meade and the employment centers in nearby Jessup, Savage and Elkridge.

## Quick Facts

- Availability** Immediate
- Size** 1,494 - 4,967 square feet
- Rental Rate** Negotiable
- Net Charges** CAM - \$4.60 (includes insurance); RE Taxes - \$2.00
- Nearby Tenants**



2023 Demographics	1 mile	3 mile	5 miles
POPULATION	<b>5,472</b>	<b>65,233</b>	<b>215,407</b>
HOUSEHOLDS	<b>1,780</b>	<b>22,414</b>	<b>77,636</b>
AVG. HH INCOME	<b>\$124,084</b>	<b>\$133,814</b>	<b>\$134,390</b>
DAYTIME POPULATION	<b>16,978</b>	<b>99,954</b>	<b>262,330</b>
TRAFFIC COUNT	<b>27,763 AADT</b> (Washington Blvd - Rt 1)		



**TENANT DIRECTORY:**

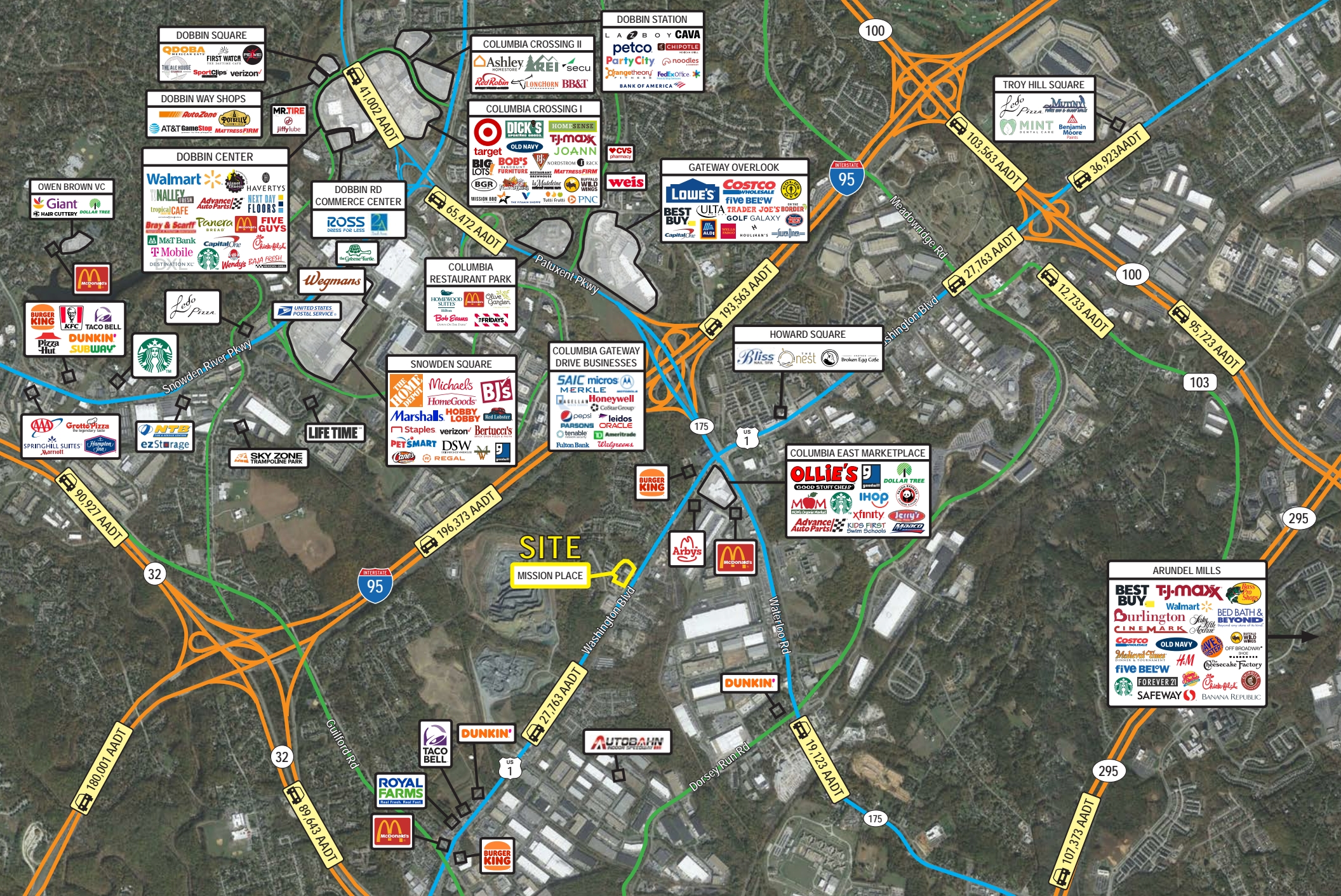
8160 WASHINGTON BLVD		
Suite 100	(A1) Fastest Labs	1,352 SF
Suite 100	(A2) iFix	846 SF
Suite 101	Barber	1,158 SF
Suite 102	Puff Planet	1,420 SF
Suite 103	Katie Nails	1,362 SF
Suite 104	AVAILABLE	4,233 SF
Suite 105	Salon Suites	2,590 SF

8150 WASHINGTON BLVD		
Suite 113	(H1) Shine & Smile Dentist	1,559 SF
Suite 113	(H2) State Farm	1,321 SF
Suite 114	AVAILABLE	2,775 SF
Suite 115	(I2) AVAILABLE	1,494 SF
Suite 115	(J) AVAILABLE	3,473 SF












# Interested? Contact:

## Marcelo Grosberg

 mgrosberg@segallgroup.com


 410.753.3948

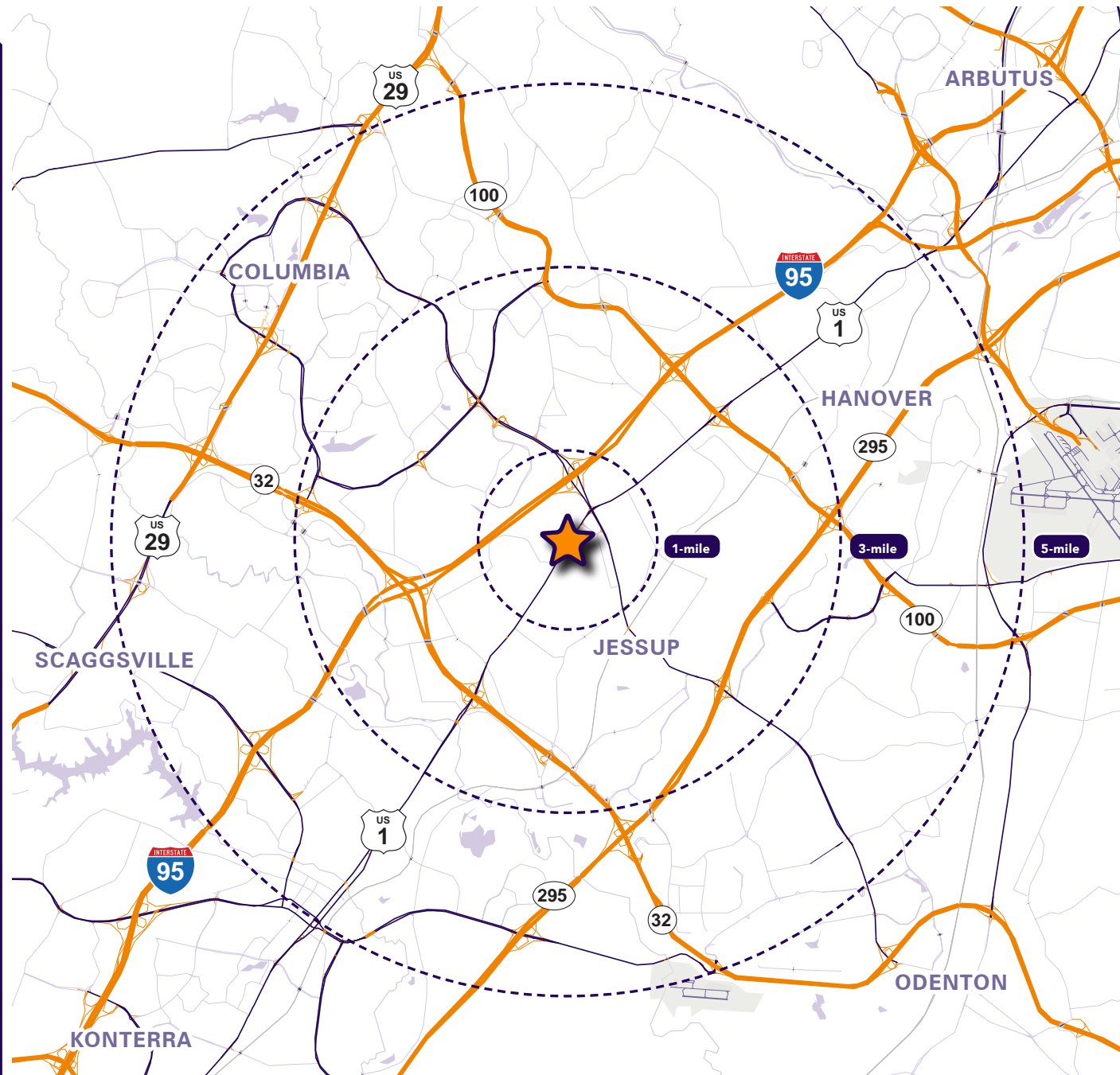
 443.927.6100

## Bryan Spund

 bspund@segallgroup.com

 410.753.3123

 443.904.2429



### Maryland

605 South Eden Street  
Suite 200  
Baltimore, MD 21231  
410.753.3000

### DC • Northern VA

8245 Boone Boulevard  
Suite 800  
Tysons, VA 22182  
202.833.3830

### Richmond

4870 Sadler Road  
Suite 300  
Glen Allen, VA 23060  
804.336.2501

### Online

[www.segallgroup.com](http://www.segallgroup.com)

Member of  


**RETAIL  
READY.**

**segall**  
GROUP