

FOR LEASE Available Immediately



Lockwood Place

600 East Pratt Street, Baltimore, MD 21202

Overview

Located at the intersection of Baltimore's business and entertainment districts, Lockwood Place is only steps away from The National Aquarium in Baltimore, Power Plant Live!, the Inner Harbor, Baltimore's World Trade Center and over 120,000 workers. This rare street level retail opportunity along heavily trafficked East Pratt Street provides for excellent exposure and highly visible signage opportunities. The adjacent Lockwood parking garage has 240 spaces.

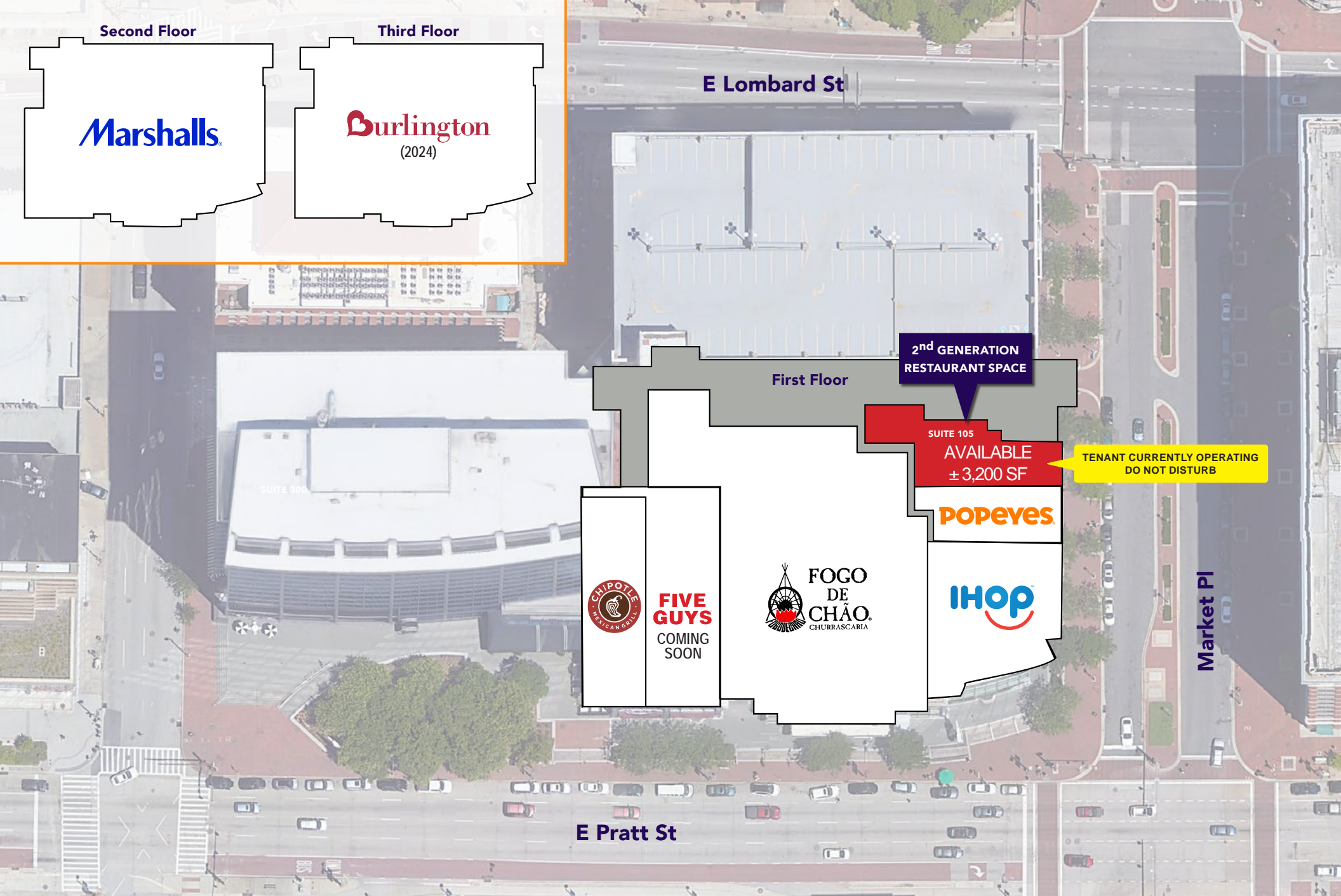
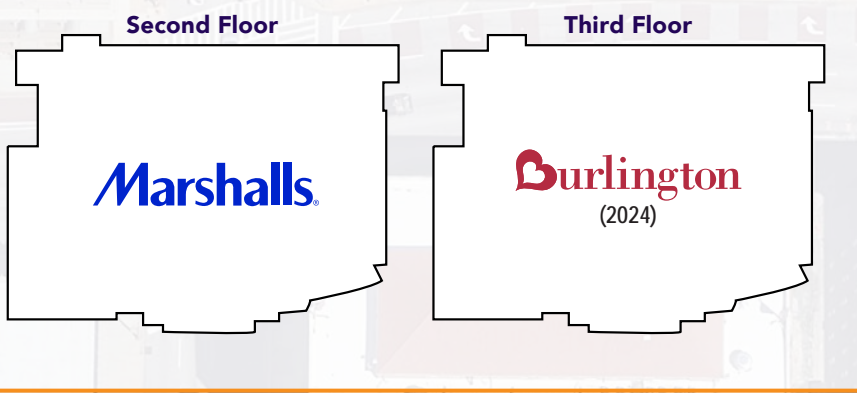
Quick Facts

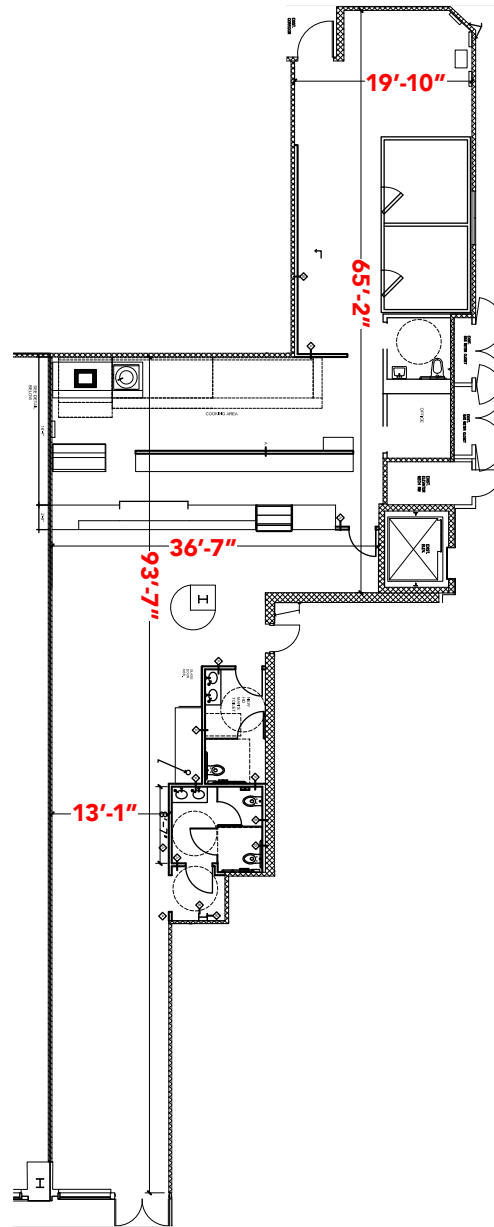
- Availability** Immediate
- Size** Suite 105: ±3,200 square feet
- Rental Rate** Negotiable
- Net Charges (Estimated)** CAM: \$6.30 PSF
Taxes: \$3.17 PSF
Insurance: \$0.40 PSF

Join

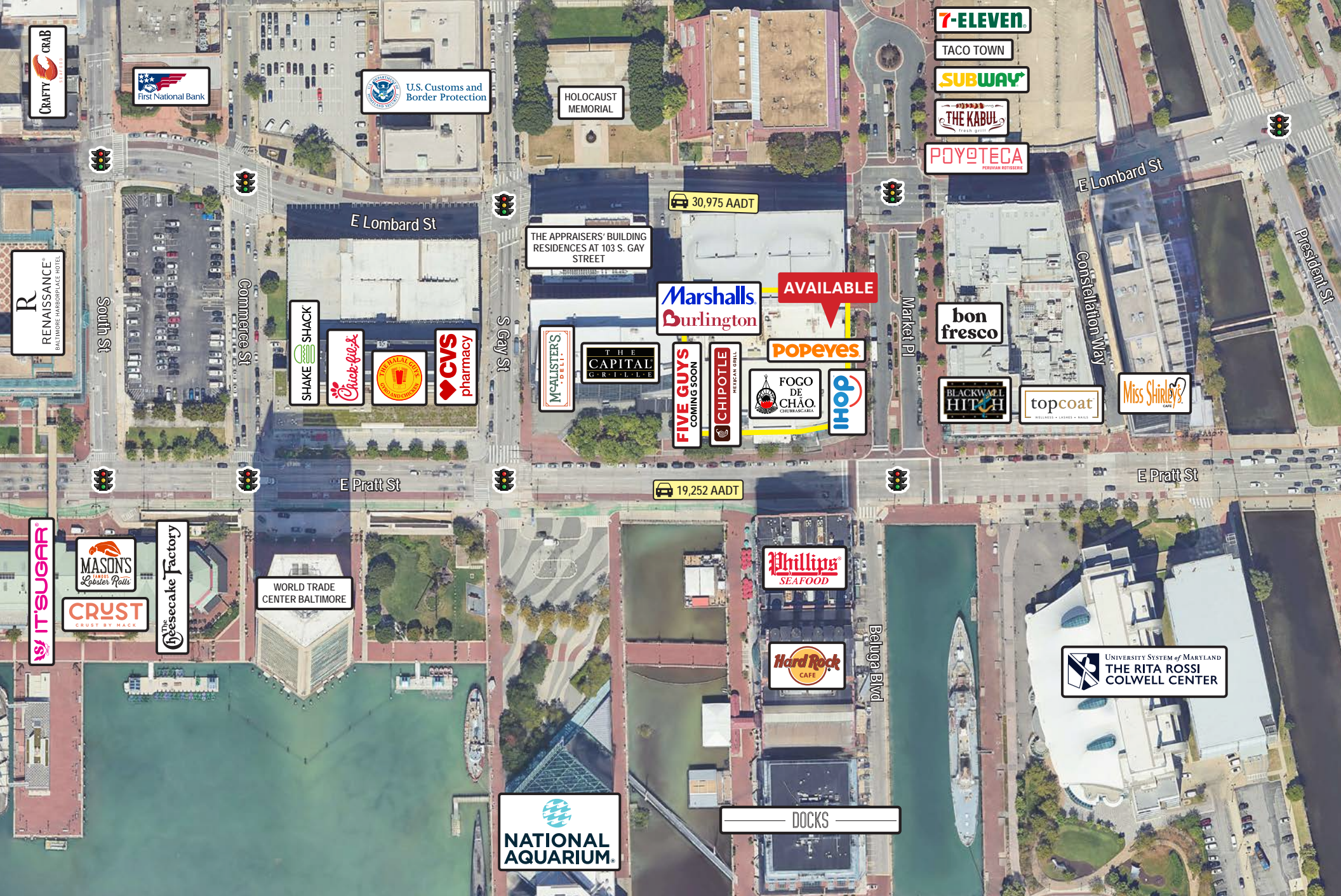


2023 Demographics	0.5 mile	1 mile	1.5 miles
POPULATION	6,884	43,257	92,155
HOUSEHOLDS	3,959	23,571	47,952
AVG. HH INCOME	\$127,076	\$109,437	\$106,074
DAYTIME POPULATION	46,177	147,141	232,614
TRAFFIC COUNTS	19,252 AADT (E Pratt Street)		





Suite 105
±3,200 SF



CRAFTY CRAB

First National Bank

U.S. Customs and Border Protection

HOLOCAUST MEMORIAL

7-ELEVEN

TACO TOWN

SUBWAY

THE KABUL

POYOTECA

E Lombard St

30,975 AADT

THE APPRAISERS' BUILDING
RESIDENCES AT 103 S. GAY STREET

AVAILABLE

Marshalls
Burlington

bon fresco

SHAKE SHACK

Chick-fil-c

TRIBAL GODS

CVS pharmacy

S Gay St

McALISTER'S DELI

THE CAPITAL GRILL

FIVE GUYS
COMING SOON

CHIPOTLE

FOGO DE CHÃO

OHIO

POPEYES

BLACKWALL HITCH

topcoat

Miss Shirley's

E Pratt St

19,252 AADT

IT'SUGAR

MASON'S
Lobster Rolls

CRUST
CRUST BY MACK

The Resecake Factory

WORLD TRADE CENTER BALTIMORE

Phillips SEAFOOD

Hard Rock CAFE

Beluga Blvd

UNIVERSITY SYSTEM OF MARYLAND
THE RITA ROSSI COLWELL CENTER

NATIONAL AQUARIUM

DOCKS



Interested? Contact:

Jonathan Garritt

✉ jgarritt@segallgroup.com

☎ 410.753.3942

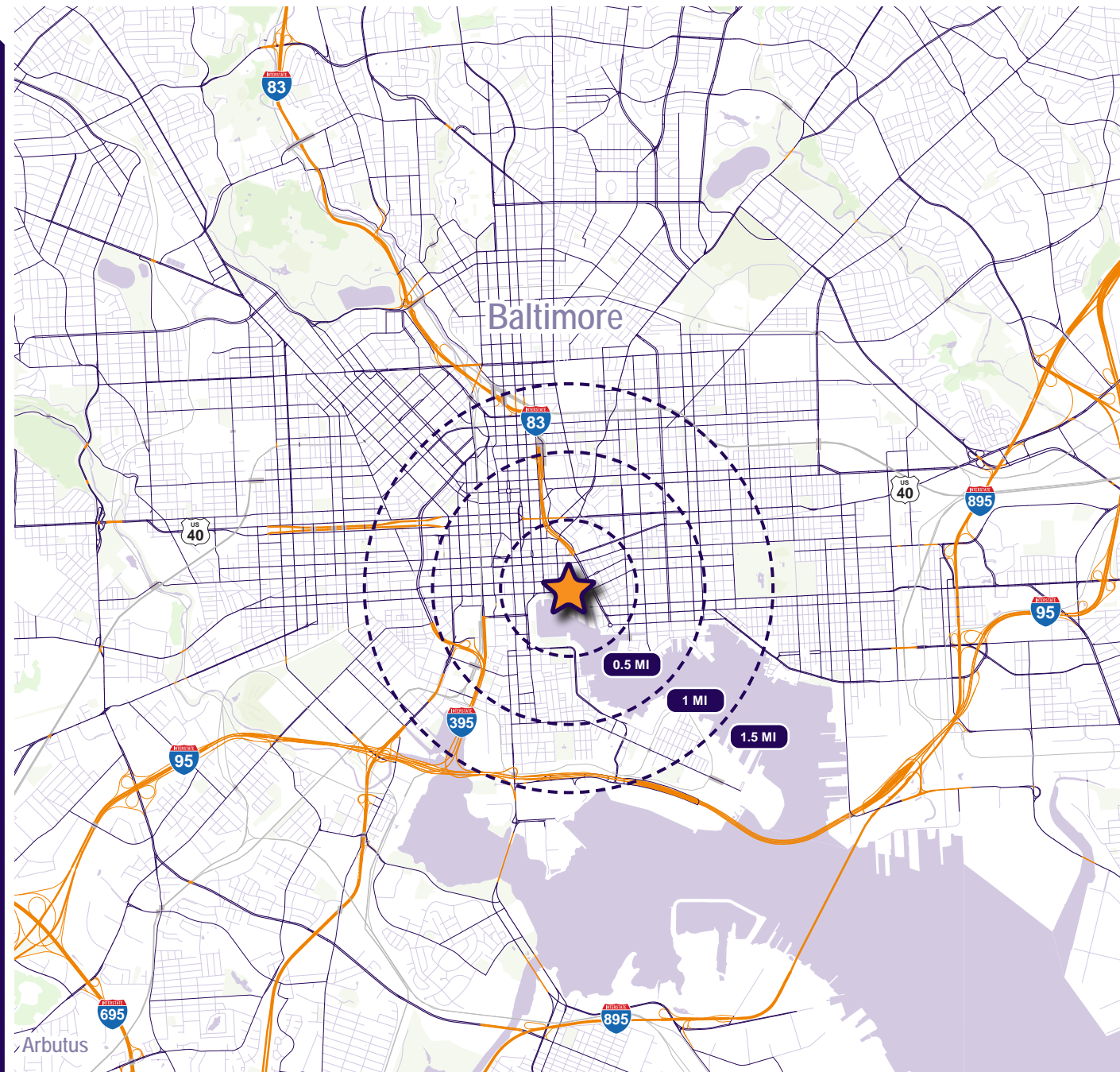
📞 443.223.0662

Marcelo Grosberg

✉ mgrosberg@segallgroup.com

☎ 410.753.3948

📞 443.927.6100



Maryland

605 South Eden Street
Suite 200
Baltimore, MD 21231
410.753.3000

DC • Northern VA

8245 Boone Boulevard
Suite 800
Tysons, VA 22182
202.833.3830

Richmond

4870 Sadler Road
Suite 300
Glen Allen, VA 23060
804.336.2501

Online

www.segallgroup.com

